

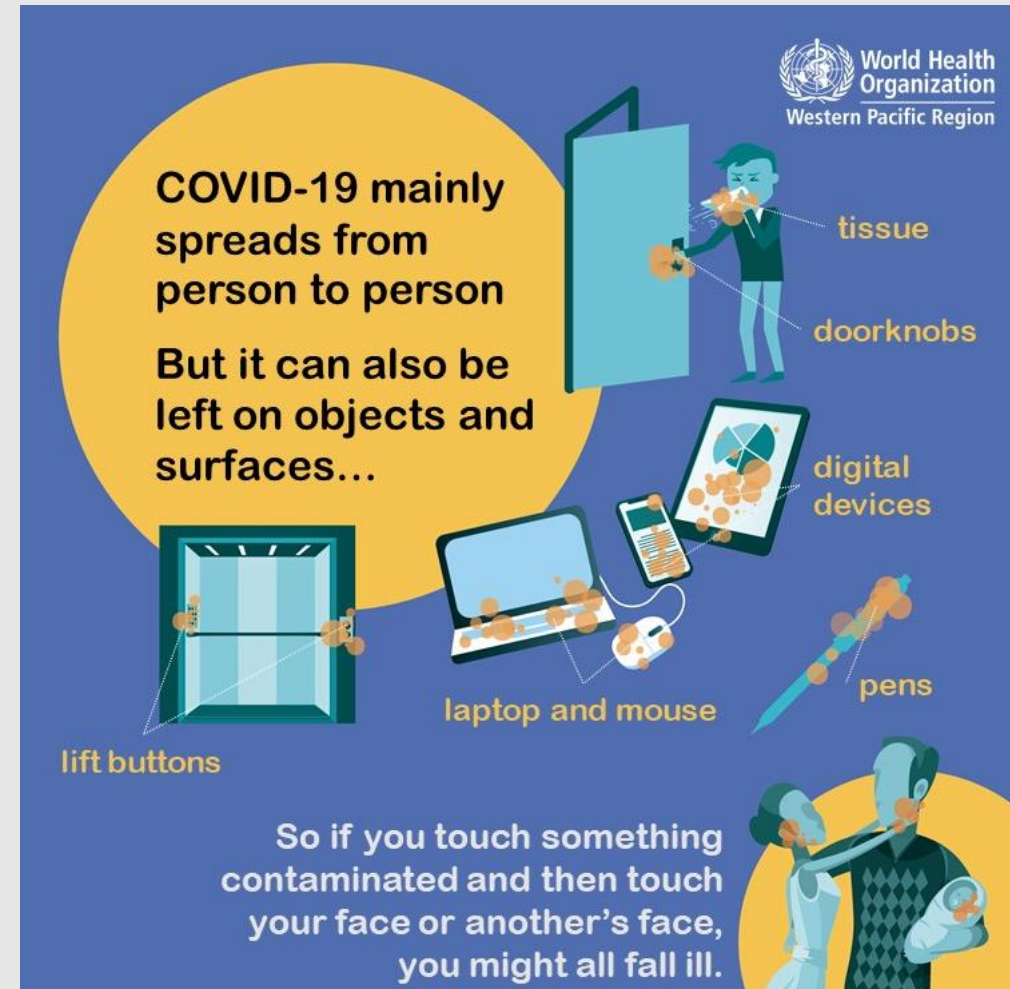


COVID-19 EMPLOYEE TRAINING

Jireh Metal Products, Inc.









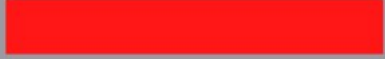
What is Covid-19 and How to Stay Safe

- <https://youtu.be/DCdxsnRF1Fk>



How Long Can COVID-19 Survive?

- <https://youtu.be/iRLFLDKW0kE>

HOW LONG IS CORONAVIRUS DETECTABLE ON SURFACES?		
	AIR	3 HOURS 
	COPPER	4 HOURS 
	CARDBOARD	24 HOURS 
	STAINLESS STEEL	2-3 DAYS 
	PLASTIC	3 DAYS 

The Do's and Don'ts of Personal Protective Equipment (PPE)

- <https://youtu.be/T5xLgETZlvs>

Face Covering Do's and Don'ts:

DO:



- ✓ Make sure you can breathe through it
- ✓ Wear it whenever going out in public
- ✓ Make sure it covers your nose and mouth
- ✓ Wash after using

DON'T:

- ✗ Use if under two years old
- ✗ Use surgical masks or other PPE intended for healthcare workers

What to do if you have symptoms of COVID-19 or a suspected/confirmed diagnosis of COVID-19?

- Notify your manager immediately.
- Manager should notify HR immediately following.
- ***If you do not feel well or you are sick we encourage you to stay home***

How to report unsafe working conditions?

- Report any unsafe working conditions to:
 - Manager
 - Safety Coordinator
 - HR

**Please review the COVID-19 Signages
posted throughout the plant and visit
Jireh Metal's Hot Issues Center Page**

[Jirehmetal.com/hot](https://jirehmetal.com/hot)

Please Stay Safe and Healthy!